



Go to this show

Bratz Passion For Fashion world tour

April 11-12

WHOSE VAIN, FASHION-OBSSESSED girlfriends are coming over all 'global-superstar' by jetsetting around the world on tour. Big-headed characters Chloe, Sasha, Yasmin and Jade, from the series and line of dolls, will perform songs, dance routines and fashion parades at Wembley Arena. There will also be other characters from the Bratz series and a spectacular finale. *Wembley Arena, Live Nation, Arena Square, Engineers Way, Wembley, London HA9 0DH. Tel: 020 8782 5500; www.wembley.co.uk* ⊕ Wembley Park



Go to this exhibition

When I Grow Up

March 28-April 10

IMAGINE A WORLD where Rufus Sewell is a punk and drummer and a trip to the zoo finds Graham Norton feeding the penguins. But did you know that this is how things could have turned out, had the daydreaming little boys inside them got their way?

Twenty famous faces, including Dame Judi Dench and David Berkoff, were asked the question: what did you want to be when you grew up? The exhibition sees David Chancellor present celebrities' childhood dreams. It aims to raise questions about childhood hopes and fears, as well as exploring the notion that freedom of choice in our dreams is crucial. *The Hospital, 24 Endell Street, London WC2H 9HQ. Tel: 020 7170 9100; www.thehospital.co.uk* ⊕ Covent Garden

Easter egg hunts

IF ANYTHING WILL make a detective out of your child, it's probably chocolate. Take aspiring sleuths to one of these Easter egg hunts...

Harrods

March 31-April 15

Head down to Harrods' toy department for a spot of detective work. Children will be given clues to find letters hidden around the department, which spell out the winning word. Once the mini sleuth has worked out what the word is, he can put his form into the entry box to win a prize. Entry forms can be picked up from Toy Enquiries.

Time: 10am-8pm (Mon-Sat); 12pm-6pm (Sun). Venue: Harrods, 87-135 Brompton Road, Knightsbridge, London SW1X 7XL. Tel: 020 7730 1234; www.harrods.com ⊕ Knightsbridge

Battersea Park Children's Zoo

April 5-18

Animal enthusiasts can search for hidden Easter eggs at Battersea Park Children's Zoo and see if they can spot which animal has the most eggs this year. Children must buy a quiz sheet (£1) and complete it as they walk around the zoo, claiming their prize at the end of the day.

Time: 10am-5pm. Venue: Battersea Park Children's Zoo, Battersea Park, London SW11 4NJ. Tel: 020 7924 5826; www.batterseaparkzoo.co.uk ⊕ Battersea Park

Discover

April 6, 8, 9

Take part in a special Easter holiday journey at Discover - the Hootah's Easter Egg Hunt, where children can search for the hidden eggs.



Time: 11am, 2pm. Ages: 0-8. Free with a ticket to the Story Trail (£3.50 for over-2s). Venue: Discover, 1 Bridge Terrace, Stratford, London E15 4BG. Tel: 020 8536 5563; www.discover.org.uk ⊕ Stratford

Kew Gardens

April 8

This Easter Sunday, take part in Kew Gardens' egg hunt and try to find the Easter Bunny around the Palm House Pond.

Time: 10am. Free with admission to the Gardens. Venue: Kew Gardens, Richmond, Surrey TW9 3AB. Tel: 020 8332 5655; www.kew.org ⊕ Kew Gardens

Daisy and Tom

April 6, 7, 9

As well as an egg hunt in the Book Department, Daisy and Tom will be hosting other fun Easter activities: children can make an Easter card and bring in their decorated eggs - with three winning a prize. There'll also be a fancy dress competition, with prizes including £50 worth of vouchers.

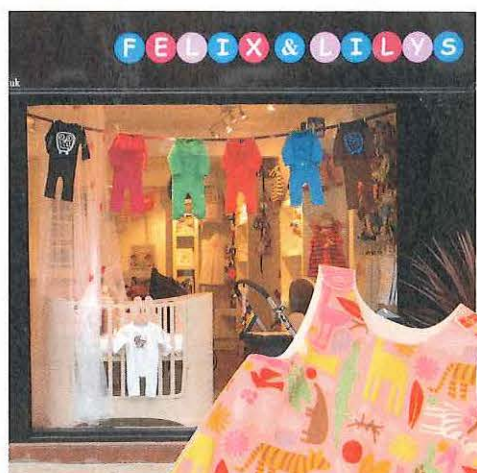
Contact store for times. Venue: Daisy and Tom, 181 Kings Road, London SW3 5EB. Tel: 020 7349 5813; www.daisyandtom.com ⊕ Sloane Square

Visit this shop

Felix & Lily's

Now open

NEW TO ISLINGTON'S cool Camden Passage is gorgeous children's boutique Felix & Lily's. Whether you're looking for practical equipment or one-off luxury items, Felix and Lily's caters for both. As well as the beautiful new childrenswear collection by Collette Dinnigan, the store houses brands such as Katvig, Ej sikke lej and km makarlo from Denmark. The boutique also stocks favourites such as i candy, Bugaboo and Baby Einstein. You can also find one-off items, from handmade nursery sets to unique skincare products. *Felix & Lily's, 3 Camden Passage, London N1 8EA. Tel: 020 7424 5423; www.felix&lilys.com* ⊕ Angel



You'll find funky children's clothes at Felix & Lily's



Felix and Lilys

Named after the children of owners Emma Brown and Vonda Norman, Felix and Lilys carries some very cool labels for children. Freshly arrived is Hula Mula, a Fifties-style Canadian label which features ra-ra skirts, ruffle blouses and quirky anchor-print romper suits. For skater boys, there's slouchy pants and Hawaiian shirts

from Knuckleheads, while mini-rockers can go for a retro look with Rolling Stones and Clash T-shirts by British brand Amplified. The shop also stocks a variety of traditional toys and musical instruments.
Time: 10.30am-6pm (Mon-Sat), 11am-5pm (Sun), 3 Camden Passage N1 8EA. Tel: 020 7424 5423; www.felixandlilys.com Angel

One Small Step, One Giant Leap

For an extensive selection of stylish children's footwear, make a beeline for One Small Step, One Giant Leap. You'll find everyday shoes from Start-rite, Aster and Primigi; party shoes from Lelli Kelly, Pom D'Api and Mod 8; and cool trainers from Converse, Nike and Adidas. The store recently launched their own label, Max and May, which features Mary Jane styles in cool silvers and pinks. The shop also has a concession in Harrods with designer shoes from labels like Prada, Armani, D&G, Simonetta and Miss Bluemarine.
East Sheen: 10am-6pm (Mon-Fri), 9am-6pm (Sat), 11am-5pm (Sun), 409 Upper Richmond Road West, East Sheen SW14 7NX. Tel: 020 8487 1288. Mortlake Harrods: 10am-8pm (Mon-Sat), 12-6pm (Sun), Knightsbridge SW1X 7XL. Tel: 020 7225 6896.
 Angel Knightsbridge
 For further details and branches, visit www.onesmallsteponegiantleap.com



Find fabulous gifts and clothes at Bob and Blossom

Bob and Blossom

This funky internet business has its own shop in Columbia Road that opens on Sundays to coincide with the famous flower market. Inside you'll find fabulous T-shirts with slogans like 'stinker' and 'bonkers', as well as T-shirts with number prints so children can let everyone know how old they are.

There are also some charming toys, including cheeky crocs on wheels and musical sheep.
Time: 9am-3pm (Sun), 140 Columbia Road, Tower Hamlets E2 7RG. Tel: 020 7739 4737; www.bobandblossom.com
 Angel Bethnal Green



I Love Gorgeous at Olive Loves Alfie

Olive Loves Alfie

This hip Stoke Newington boutique stocks some of the hottest labels from around the world. You'll find children's kimonos by Lucky Wang NYC, stripey leggings from Danish brand Katvig and bright, retro prints by Finnish label Marimekko. There's also beautiful British fashion, with traditional dresses from I Love Gorgeous, retro prints from Petra Boase and mini leg warmers from Baby Legs.
Time: 9.30am-5.30pm (Mon-Fri), 10am-6pm (Sat), 11am-5pm (Sun), 84 Stoke Newington Church Street N16 OAP. Tel: 020 7241 4212; www.olivelovesalfie.co.uk
 Angel Stoke Newington

Their Nibs

Since setting up shop in 2003, Their Nibs have gained a reputation for their playful prints. For boys, there are cowboy-patterned pyjamas and pirate shirts, while for girls there are flowy cowgirl dresses with daffodil and mermaid designs. You can also find bedding and throws in Their Nibs prints.
Time: 10am-6pm (Mon-Sat), 10am-5pm (Wed, Thurs), 12-5pm (Sun), 214 Kensington Park Road, Notting Hill Gate W11 1NR. Tel: 020 7221 4263. Ladbrooke Grove. For further stockists, see www.theirnibs.com



Elias and Grace

Located in trendy Primrose Hill, Elias and Grace specialise in fashions for the under-tens. You'll find fun T-shirts from Dandy Star, with slogans like 'pow' and 'pop' and 'smile'. For girls, there are lots of frilly skirts and tops by designers such as Quincy and Maan, with plenty of trousers and shorts for boys. The store also carries sophisticated maternity wear, with casual frocks and smart evening dresses from names like Stella McCartney, Luella and Chloé. There is also a selection of quirky toys and gifts and a mini play area to keep children busy.
Time: 10am-6pm (Mon-Sat), 12-6pm (Sun), 158 Regent's Park Road, Primrose Hill NW1 8XN. Tel: 020 7449 0574; www.eliasandgrace.com
 Angel Chalk Farm

After Noah

Having started out as an antique furniture shop, After Noah have branched out into vintage and traditional toys, with a dedicated toy shop now open alongside the main store in Islington. Sit-on cars, prams and jointed teddy bears are among the goodies on offer. There are also plenty of jigsaws and games for rainy days and lights for children's rooms.
Time: 10am-6pm (Mon-Sat), 12-5pm (Sun), 121 Upper Street, Islington N1 1QP. Tel: 020 7359 4281; www.afternoah.com
 Angel



Find vintage toys at After Noah